



Conform to ISO3691-1 EN1175:2020
 EN12053 EN 16307-1
 EN12100 EMC EN 12895
 Related to CE directive:
 2006/42/EC (Machinery)
 2014/30/EU (Electromagnetic compatibility)

Model: CDDR15

Walkie type electric stacker provides a cost effective solution for applications involving medium lifting storage and short distance pallets transportation.



AC

* photo shown with model CDDR15-II with free lifting

Advantages: (CDDR15-II/CDDR15-II)

STRUCTURAL AND SAFETY:

- Advanced AC control system intelligently regenerative brake system.
- Multi-function display with BD) and hour meter etc.
- Emergency reversing device.
- Auto deceleration system utilizes regenerative braking.
- Built-in pressure relief valve protects the trucks from overloads.
- Emergency power disconnect .
- Stepless speed control.
- With lifting limit switch to shut off pump motor at the max. lifting height.
- Vertical drive motor has a small turning radius. The motor structure is water-proof and dust-proof.

SERVICEABILITY:

- CANbus technology reduces wiring complexity and increase reliability.
- Advanced AC control system with brushless motor.
- Auto deceleration system utilizes regenerative braking.
- Side-way battery with roll-out system is very convenient for replacement.

OPTIMUM STRUCTURAL DESIGN:

- Low barycenter ensures the stable operation.
- Vertical driving wheel ensures convenient maintenance and small turning radius. Water-proof and dust-proof motor structure, keeps the braking and motor more durable and reliable.
- The mast and the frame are dividable and exchangeable.
- Full free lifting, fit for low roof house. (3M lift height truck can enter into a 2M door)



CDDR15-III mast



Vertical Drive Wheel



Option: Initial lifting with double-pallet function turn to P72



RUVI Handle (standard for CDDR-III)



Frei tiller head with one side lifting button (option)



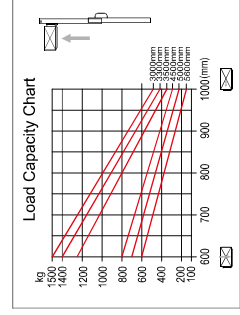
Germany Tiller Head with big buttons (Option for CDDR15-I proportional lifting)

Electric Walkie Stacker

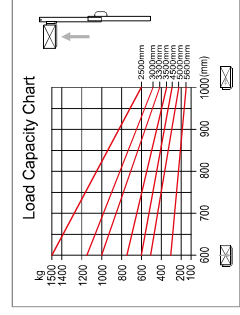


* Picture shown is model CDDR15-III without lift mast

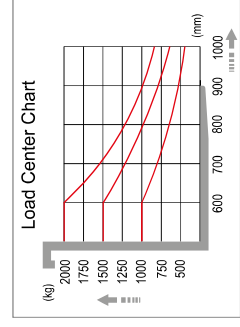
Model	Remarks
CDDR15- I	High configuration with proportional valve
CDDR15- II	Standard configuration
CDDR15- III	Light duty type



CDDR15-I/CDDR15-II



CDDR15-III



1.2 Manufacturer's type designation	CDDR15- I		CDDR15- II		CDDR15- III		CDDR15- III	
	Electric	Pedestrian	Electric	Pedestrian	Electric	Pedestrian	Electric	Pedestrian
1.3 Drive electric (battery type, main, ...), diesel, petrol, fuel gas								
1.4 Operator type: hand, pedestrian, standing, seated, order-picker								
1.5 Rated capacity/rated load	1500	1500	1500	1500	1500	1500	1500	1500
1.6 Load centre distance	c (mm)	600	600	600	600	600	600	600
1.7 Load distance, centre of drive axle to fork	x (mm)	697	697	697	697	697	697	697
1.8 Wheelbase	y (mm)	1383	1383	1383	1383	1383	1383	1383
2.1 Service weight	kg	1190/1240/1280/1340/1420/1500/1580	1140/1190/1200/1260/1370/1400/1530	760/810/835/860	760/810/835/860	1185/1205/1225	1185/1205/1225	1185/1205/1225
2.2 Axle loading, laden front/rear	kg	1430/1270	1400/1250	1280/1070	1280/1070	650/200	650/200	650/200
2.3 Axle loading, unladen front/rear	kg	843/356	820/330					
3.1 Tyres: solid rubber, semi-pneumatic, pneumatic, polyurethane		Polyurethane				Polyurethane		
3.2 Tyre size, front	φ550x70					φ550x70		
3.3 Tyre size, rear	φ80x70					φ80x70		
3.4 Additional wheels (dimensions)	φ150x60					φ150x60		
3.5 Wheels: number front/rear (x = dimension)	1x+1/4					1x+1/4		
3.6 Tread, front	b10 (mm)	520	520	520	520	520	520	520
3.7 Tread, rear	b11 (mm)	405/530	405/530	405/530	405/530	405/530	405/530	405/530
4.2 Height, mast lowered	h1 (mm)	1735/1865/2135/2235/2050/2210/2410	2087/1837/2087/2237	2054/2214/2414	2054/2214/2414	2054/2214/2414	2054/2214/2414	2054/2214/2414
4.3 Free lift	h2 (mm)	1300/1550/1700/1800/1570/1740/1940	N/A	N/A	N/A	1570/1740/1940	1570/1740/1940	1570/1740/1940
4.4 Max. lift height	h3 (mm)	2500/3000/3300/3500/4900/5000/5900	1500/2500/3000/3300/3500/4900/5000/5900	4500/5000/5600	4500/5000/5600	4500/5000/5600	4500/5000/5600	4500/5000/5600
4.5 Height, mast extended	h4 (mm)	2955/3455/3755/3955/5030/5106/110	2087/3087/3387/3887	5000/5106/110	5000/5106/110	5000/5106/110	5000/5106/110	5000/5106/110
4.9 Height, drawbar in driving position min./max.	h14 (mm)	670/1300	670/1300	670/1300	670/1300	670/1300	670/1300	670/1300
4.10 Height of wheel arms	h8 (mm)	81	81	81	81	81	81	81
4.15 Height, lowered	h12 (mm)	90	90	90	90	90	90	90
4.19 Overall length	l1 (mm)	1948/2028	1948/2028	1948/2028	1948/2028	1948/2028	1948/2028	1948/2028
4.20 Length to face of forks	l2 (mm)	878	878	878	878	878	878	878
4.21 Overall width	b102 (mm)	820	820	820	820	820	820	820
4.22 Fork dimensions DIN ISO 2331	s / t / r (mm)	60/180/100/1150	60/180/100/1150	60/170/100/1150	60/170/100/1150	60/170/100/1150	60/170/100/1150	60/170/100/1150
4.25 Fork spread	b5 (mm)	570/695	570/695	570/695	570/695	570/695	570/695	570/695
4.32 Ground clearance, centre of wheelbase	m2 (mm)	31	31	26	26	26	26	26
4.34.1 Axle width for pallets 1000 x 1200 crossways	As1 (mm)	2450	2450	2480	2480	2480	2480	2480
4.34.2 Axle width for pallets 800 x 1200 lengthways	As2 (mm)	2420	2420	2450	2450	2450	2450	2450
4.35 Travel radius	Wa (mm)	1575	1575	1605	1605	1605	1605	1605
5.2 Lift speed, laden/unladen	kn/h	5.8/6.0	5.8/6.0	5.8/6.0	5.8/6.0	5.8/6.0	5.8/6.0	5.8/6.0
5.3 Lowering speed, laden/unladen	m/s	0.4/0.16/0.24	0.11/0.16	0.09/0.16	0.09/0.16	0.09/0.16	0.09/0.16	0.09/0.16
5.8 Max. gradeability, laden/unladen	%	0.4/0.38/0.26	0.14/0.19	0.15/0.16	0.15/0.16	0.15/0.16	0.15/0.16	0.15/0.16
5.10 Service brake		8/15	8/15	6/15	6/15	6/15	6/15	6/15
6.1 Drive motor rating S2 60 min	kW	1.5(AC)	1.2(AC)	1.2(AC)	1.2(AC)	1.2(AC)	1.2(AC)	1.2(AC)
6.2 Lift motor rating at S3 15%	kW	3.2	3	2.2	2.2	2.2	2.2	2.2
6.4 Battery voltage/nominal capacity K5	(V)/Ah(kWh)	24/200	24/240	24/200	24/200	24/200	24/200	24/200
6.5 Battery weight	kg	260	220	160	160	160	160	160
Additional Data	10.7 Sound pressure level at the driver's seat	dB(A)	70	70	70	70	70	70

* Option: Lithium battery 150AH (Charger 24V/50A)
Lithium battery 230AH (Charger 24V/100A)

