



A-SAFE

eFlexTM

Double RackEnd Barrier



Designed to protect the end of racking aisles where turning vehicles and equipment can impact vulnerable racking structures.

The Double Rail version will absorb and deflect repeated contact from heavier vehicles with higher centres of gravity, preventing damage to racking systems.

The circular end posts provide enhanced protection at the barrier ends which are most susceptible to impact. Innovative spinning collars further deflect and dissipate impact forces.



TYSENTECH
www.tysentech.com

Tysen Technologies Private Limited

Tel: (65) 6694 3803 | Fax: (65) 6694 3801 | E: info@tysentech.com

Add.: 152 Tuas South Avenue 2, West Point Bizhub, Singapore 637181

Tested to the
global benchmark
in barrier safety

bsi. PAS 13

Code of Practice for
Workplace Safety
Barriers

Engineered for performance

Memaplex™ advanced strength polymer created from an exclusive composition of the most sophisticated polyolefins and rubber additives, expertly blended for unequalled strength and flexibility.

Unrivalled recovery through a unique built-in memory that allows the barrier to flex, cushion and reform repeatedly upon impact, saving vast amounts in barrier and vehicle repairs.

Huge return on Investment from incident prevention and downtime avoidance as rails, vehicles, floors and infrastructure do not need replacing or repair.

Rotating wear collars deflect force from repeat glancing blows preventing expensive on-going maintenance costs.

Self coloured and UV stabilised for continued high visibility and long lasting aesthetics with no repainting.

Ultra-low maintenance material is chemical and water resistant, non-corrosive, non-scratch and self coloured so no repainting, rusting, flaking or corrosion.

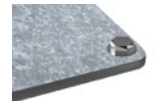
Environmentally friendly and 100% recyclable.

Zinc nickel, electrophoretic coating on base plates as standard, provides advanced protection against corrosion damage.

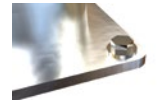
ADDITIONAL BASE OPTIONS



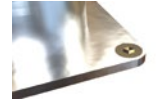
Countersunk Bolts



Galvanised Steel



Stainless Steel 316 Standard

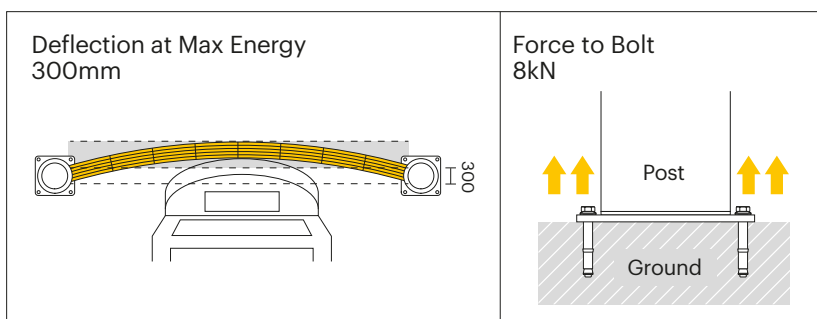


Stainless Steel 316 Countersunk

Technical Information

Impact Test	Impact Angle on 2000mm Post Centres			
	90°	67.5°	45°	22.5°
Mid Rail Max Energy (Joules)	6,000	7,029	12,000	40,971

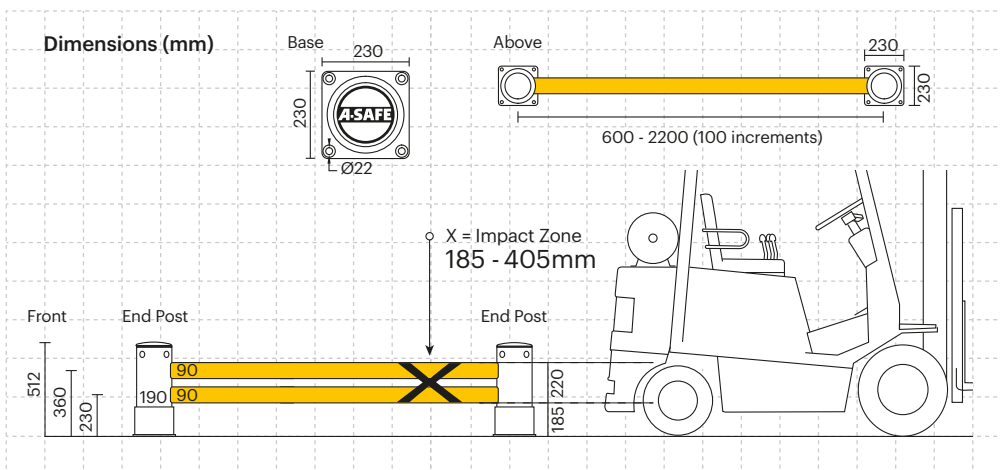
End Post Max Energy (Joules) - 90°	3,600
------------------------------------	-------



Material Properties	MEMAPLEX™
Temperature Range	-10°C to 50°C
Ignition Temperature	370°C to 390°C
Flash Point	350°C to 370°C
Toxicity	Not Hazardous
Chemical Resistance	Excellent - ISO/TR 10358
Weathering Stability (Grey Scale)	5/5*
Light Stability (Blue Wool Scale)	7/8**
Static Rating (Surface Resistivity)	1015 - 1016 Ω
Hygiene Seals	No

* Weathering scale 1 is very poor and 5 is excellent

** Light stability scale 1 is very poor and 8 is excellent

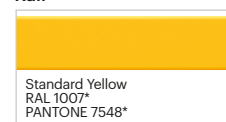


Colour Combination

Post



Rail



*Please note that the RAL and PANTONE colours listed are the closest match to standard A-SAFE colours, but may not be exact matches of the actual product colour and should be used for guidance only.

A-SAFE UK Ltd

Ainley House, Ainleys Industrial Estate, Elland, Halifax HX5 9JP United Kingdom

www.asafe.com

